

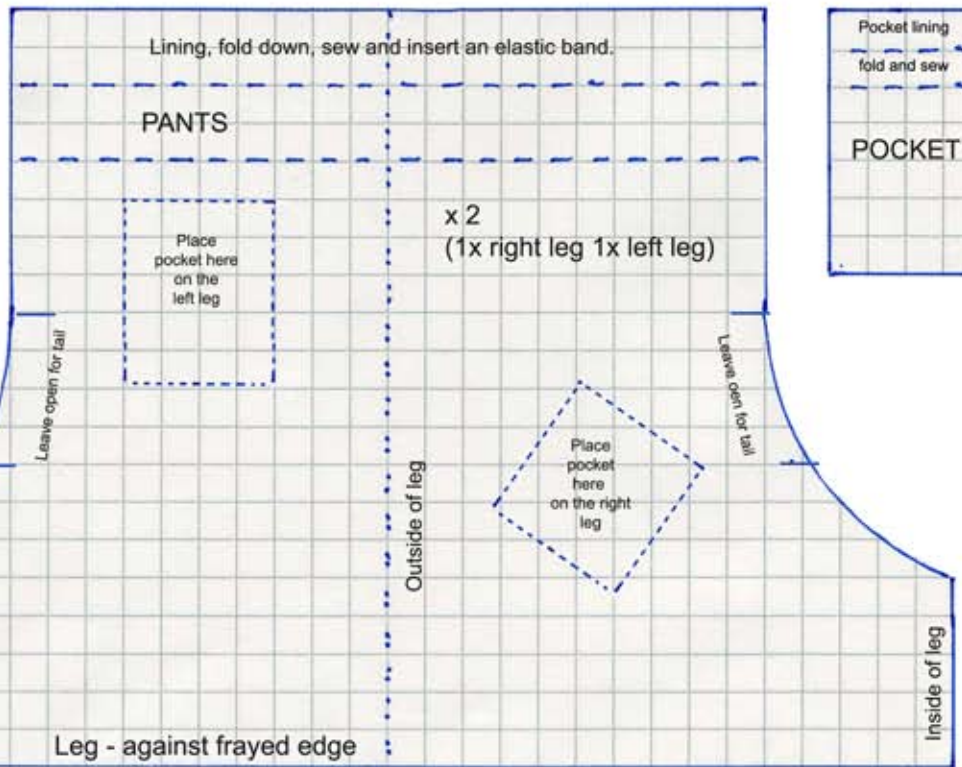
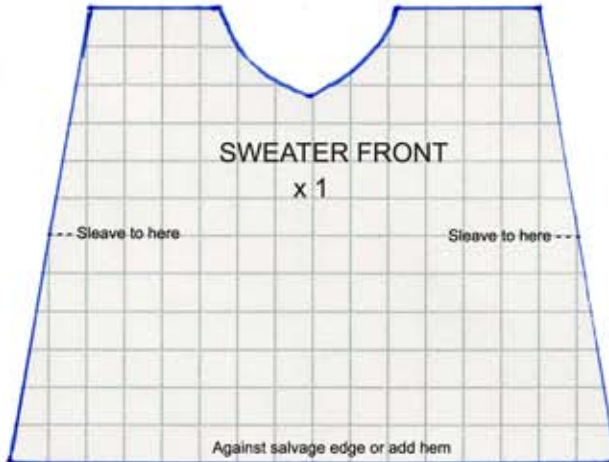
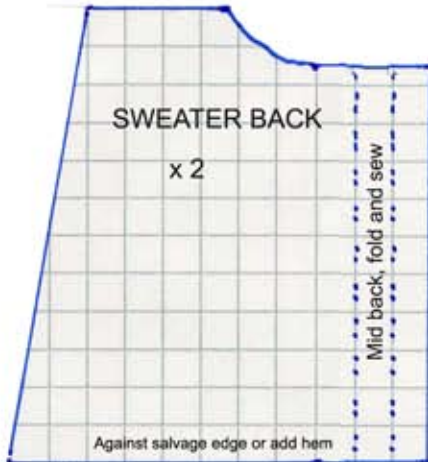
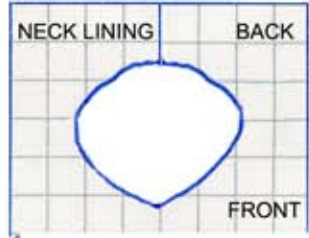


# FOREST TROLL CLOTHES



The pattern will fit a 6,7" tall troll. If the troll is smaller or bigger, adapt the pattern accordingly. The pattern is including a small allowance (5 mm / 0,2")

Fold the cuffs on the sleeves and sew them.  
Sew the shoulder seams.  
Sew the lining along the neck and fold it against the right side.  
Fold the edges in the back and sew them.  
Sew the sleeve seams.  
Sew the side seams.  
Sew button holes and buttons or use snap buttons.



Fold and sew the lining of the pocket.  
Sew the patch onto the right leg.  
Sew the pocket onto the left leg.  
Sew the seam on the front.  
Fold the lining. Insert an elastic band, pull until the waist has the correct measurement.  
Secure the band with a pin on each end.  
Sew the seam on the back, but leave an opening for the tail.  
Sew some extra stitches through the elastic band to secure it.  
Sew the seam allowance around the hole for the tail.  
Sew the inside leg seams.  
Sew braces in the back and buttons on the front.

